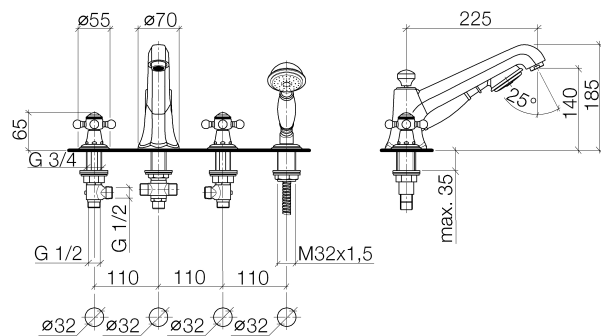




Product specifications

- **225 mm projection**
 - M 28 x 1 aerator – male thread
 - back flow preventer in shower outlet
 - automatic bath/shower diverter
 - 1/2" deck valves with ceramic head parts
 - hand shower with back flow preventer
 - metal shower hose 2250 mm, chrome-plated, consisting of 1 pc. high pressure hose 500 mm and 1 pc. metal hose 1750 mm with turning cone
 - hole diameter 32 mm
 - 35° 1/2" x 1/2" nipple for shower
 - 2x 1/2" x 1/2" x 400 mm high pressure hose
 - guide for shower hose
 - Max. hand shower flow 9 l/min
- The Perfecto installation kit is recommended for optimum assembly, depending upon application. Intrinsic protection against back flow.

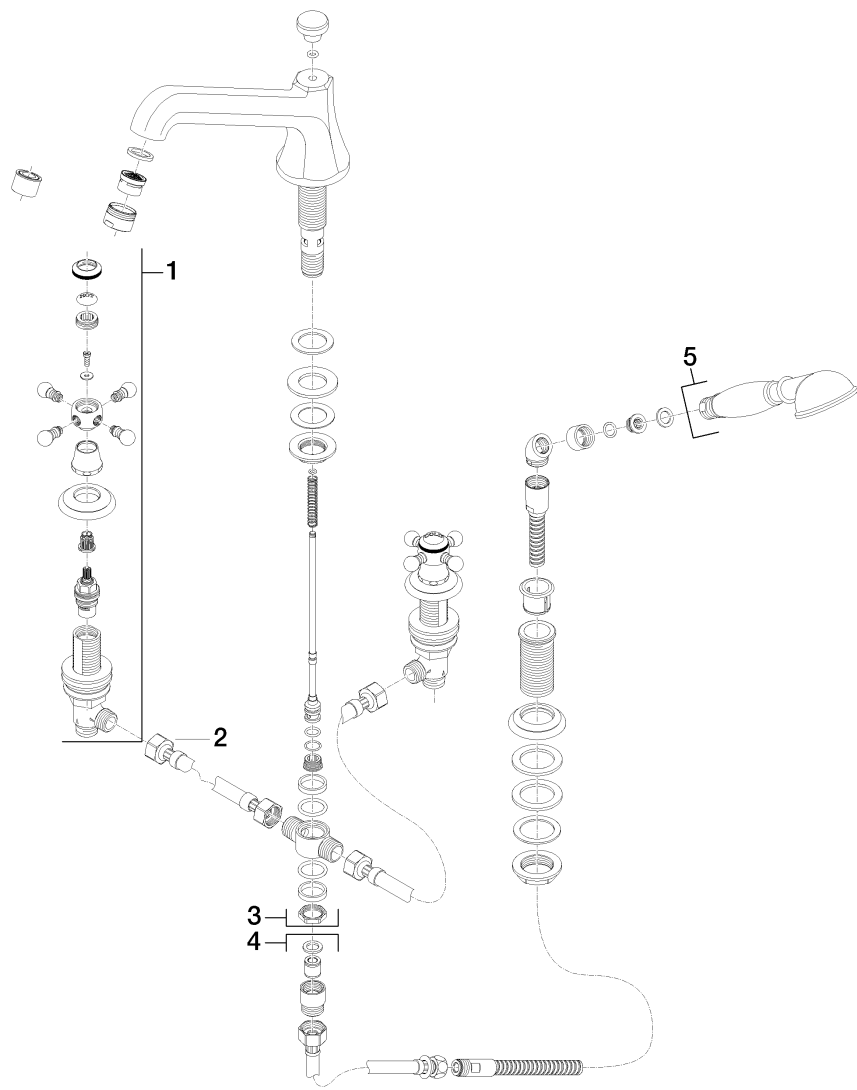




Surfaces

- chrome 27502360-00
- platinum matt 27502360-06
- platinum 27502360-08
- Durabrass 27502360-09

Exploded assembly drawing



Order quantity

No.	Article number	Name	Installation quantity
1	20000360ff	side panel	1
2	1250297090	hose	2
3	13502380ff	spout	1
4	27703360ff	shower set	1
5	28002970ff0010	shower	1

Flow rate chart

